

The Creator Of The Human Body Was An Engineer Of All Trades

Adel Hanna, Ph.D., P. Eng., F, ASCE

Abstract—The human body is mastered by a group of engineers, scientists, artists and much more. In the field of engineering, the creator had used engineering theories, which are not known to the engineering communities. In achieving such task, the creator had used the fundamental of Civil Engineering, Electrical Engineering, Mechanical Engineering and Computer Science Engineering. These beside the contribution of Fine Arts and beyond, where the beauty and the function were put together to create this complex structure. Engineers are learning from this creation.

INTRODUCTION:

The human body is engineered from head to toes. Specifically, the human skeleton is the work of a structure engineer, while the feet are designed by a foundation engineer, the communication between all part of the body with the brain is wired or perhaps wireless designed by an electrical engineer, the disposal of the solid materials and the fluid from the human body is designed by a mechanical engineer, the blood running in the vain followed the fluid mechanics theories, the human brain was the motive behind the development of the personal computer. Not to mention the contribution of fine arts and beyond (figure 1)

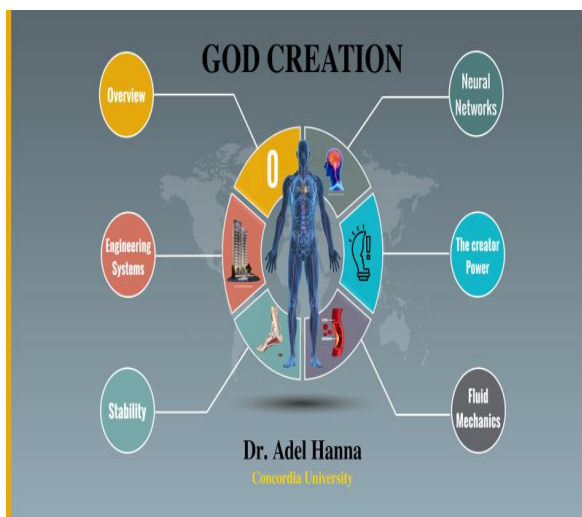


Figure 1

CONTRIBUTION OF ENGINEERS TO THE DEVELOPEMENT OF THE HUMAN BODY

Civil Engineering,

a. Structural Engineering.

As a structure engineer myself, I design concrete / steel skeletons for high-rise buildings. These skeletons are static, while the skeleton of the human body allows the person to mobilize in several directions, specifically to; move, turn, bend, run, walk etc. It is designed with high level of precision, which was never recalled or updated. (figure 2 and 3)

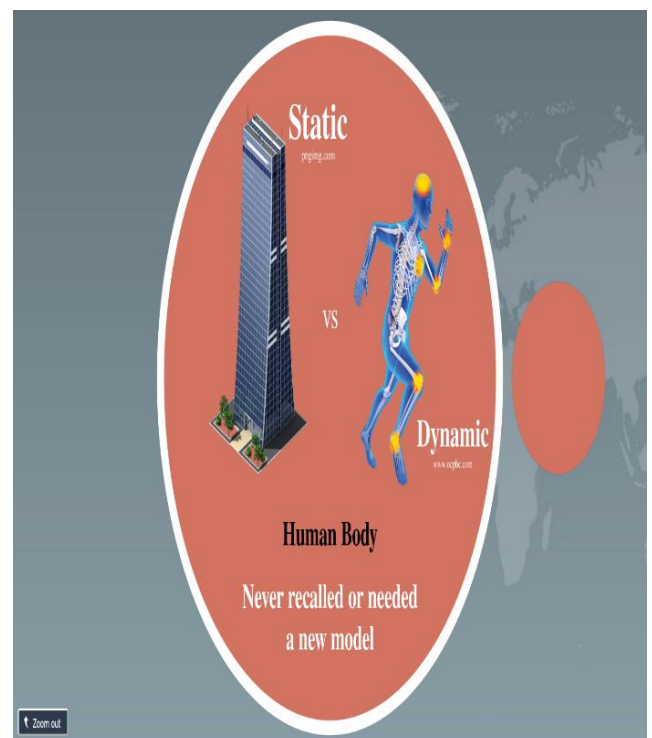


Figure 2

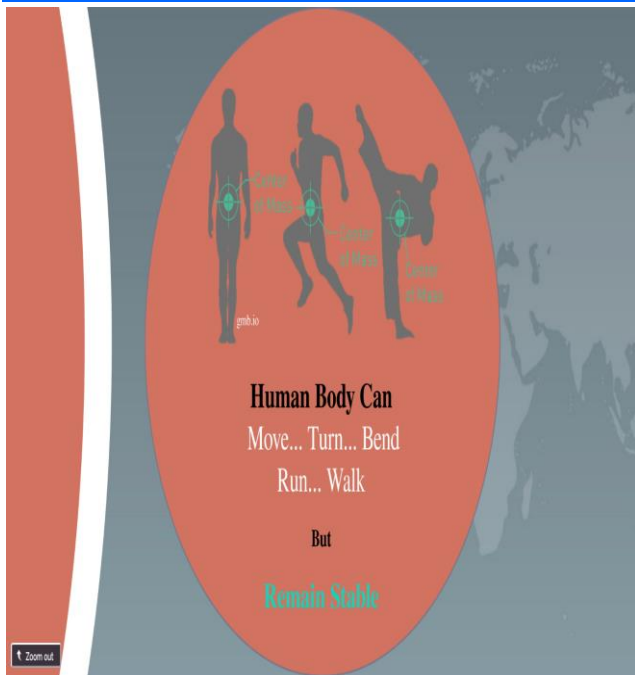


Figure 3

b. Foundation Engineering

My research is focused on foundation engineering, which is the part the structure, which is responsible to transfer the weight of the person to the ground. In the past, I collaborated with a “Medical Doctor” to conduct research on the human feet. I concluded that it is necessary for the human feet to have the shape, the curvature, and the toes to maintain the weight in middle of the foot. This is necessary for the person to stand, walk, run without pain/injury. (figure 4)

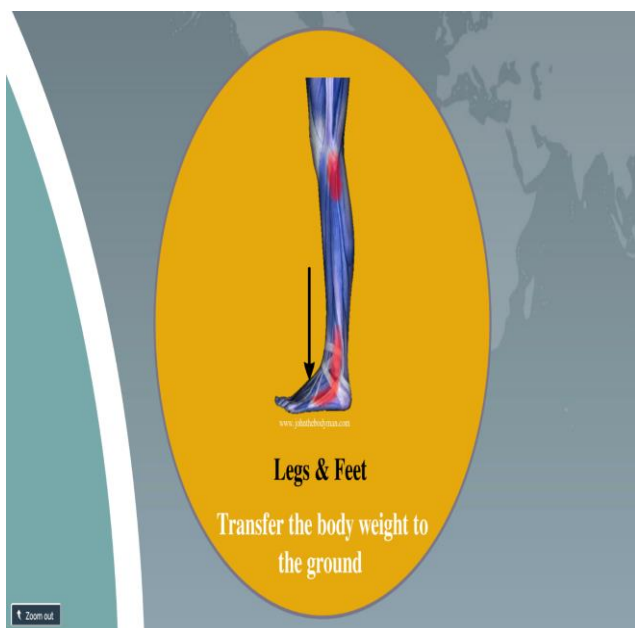


Figure 4

It essential then for a person to maintain his/her weight, to remain comfort in performing his daily activities. For a person with a large belly (pregnant) his/her will move forward from the center of the feet, causing unbalance, for possible to overturn or fall down, on the other hand, for a person who is heavy in the back may have some back pain when walking (Figure 5)

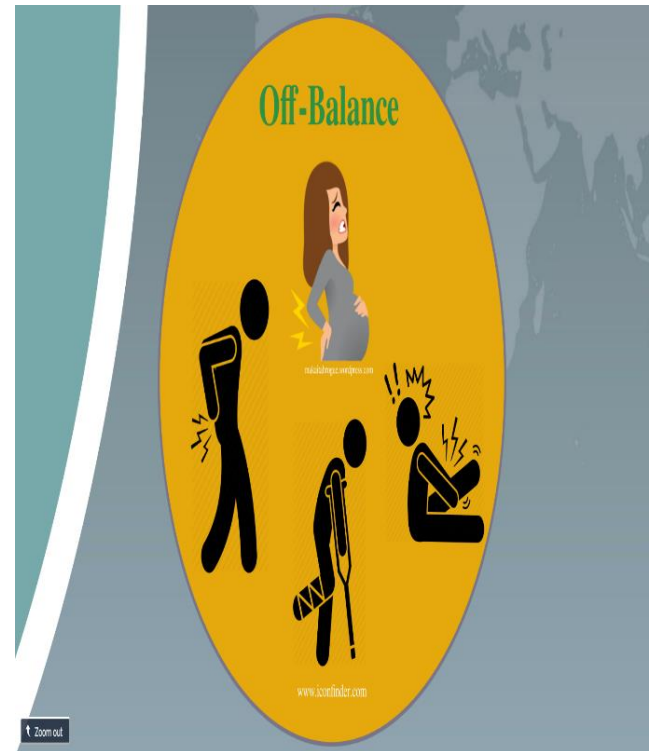


Figure 5

Electrical Engineering,

The human body is made of several elements, communication between these elements with the brain in the form of wired or wireless is in place. As such, if the human body experience any discomfort at any of these elements, the brain gets the massage first and act fast to orders some remedies be taken, could be in the form of scratch/massage or call for help etc. The brain will continue to monitor the situation, until the body reached a normal state (figure 6)

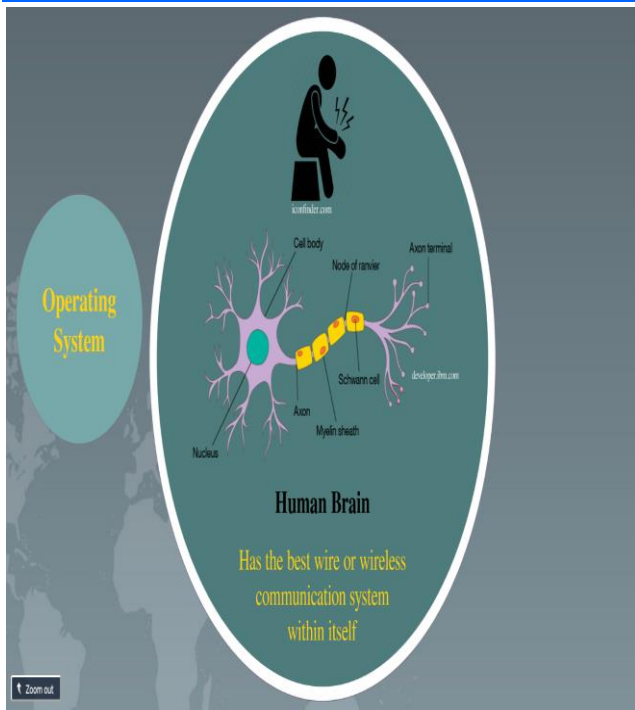


Figure 6

Mechanical Engineering.

The human body is a machine running 24/7. The body is constantly receiving solid and liquid to survive. After the body extract the goods from the food, it disposes the rest into two deferent routes, one for the solid and the other for the liquid. Accordingly, the human body is equipped with drainage systems. (Figure 7)

About 10 years ago, I went to see a cardiologist to check on my heart. I noted that he is posting a certificate of Bachelor degree in Mechanical Engineering. When I questioned him about the reason for switching from engineering to medicine, his answer was “both are the same”. Which is true, as the theory governs the water running in pipes is the same theory governs the blood running in veins, both following the concept of “fluid mechanics”. (Figures 8 and 9)

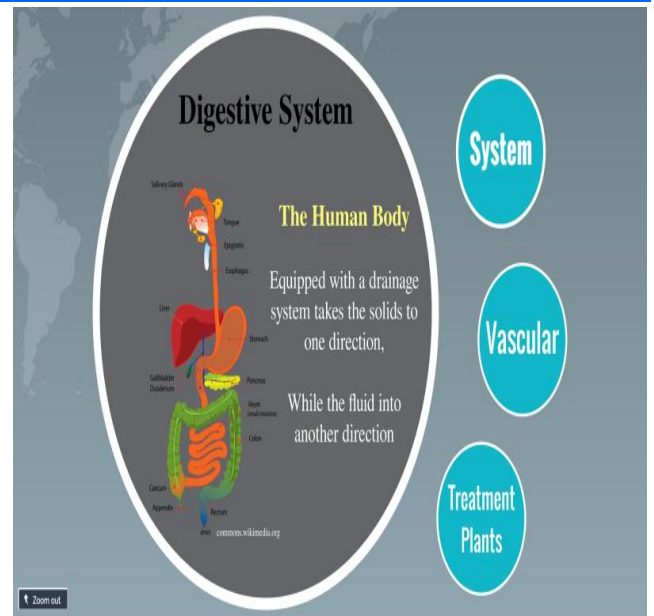


Figure 7

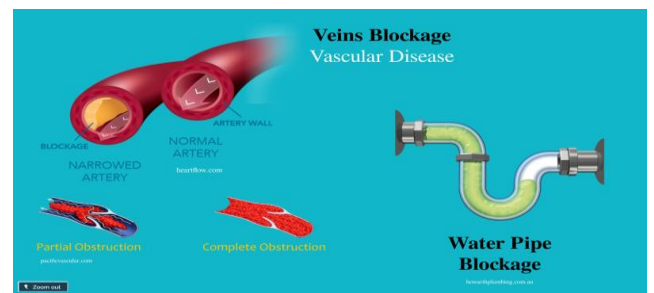


Figure 8

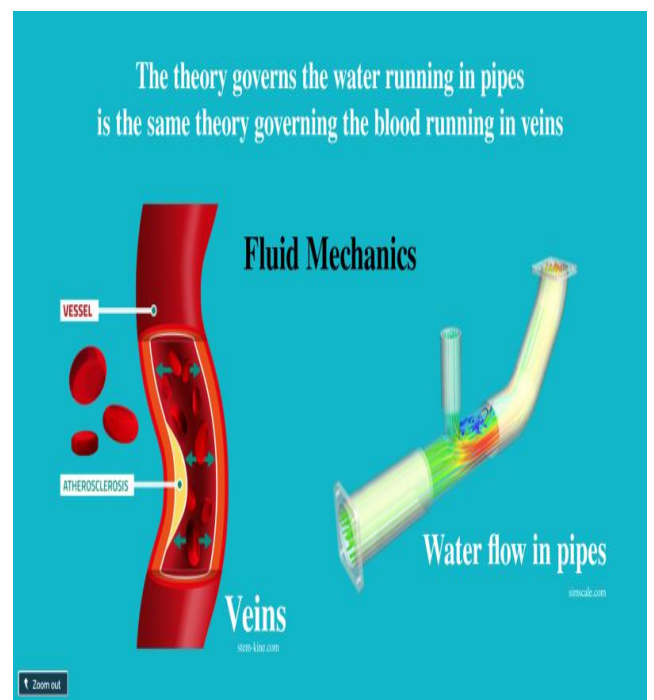


Figure 9

Computer Science Engineering,

The idea of the personal computer “PC” was taken from the human brain, as part of the brain represents the operating system, which instruct the person to what to do or to say next, while the other part of the brain represents the hard disk, which stores information for many years, as I recall my friends from schools and universities

Fine arts

While fine arts are a field by itself, in fact it has some engineering elements of creation. The creator allocated several artistic features in the human body, to include but not limited to position of the eyes, ears, mouth, hairs etc. where beauty and function come together.

OTHER HUMAN CREATION

To the credit of the creator, I may repeat same analogy reported above to hundreds of other creations, we call them “animals. Animals come in in different shapes and functions; some are vegetarian, others are not, some large in size, other cannot be seen by naked eye, some live in the air, other live on the ground and other in the water. These colorful animals with a highly sophisticated structure demonstrate further the power of the creator. Thus regardless, the person believes, GOD is the creator of all. (Figure 10)



Figure 10

CONCLUSION

The above demonstrate the power of GOD, the creators of all these creatures. Regardless the person believes, GOD is the creator of all.